



ENGLISH

WILLI GELLER  
*Creation*  
PRODUCT CATALOGUE

CE 0483

REF

000261

20g

S-057

WILLI GELLER  
*Creation*

Manufacturer Klema, Koblacherstr. 3a, AT-6900 Leoben

LOT  
D7285



## Simply Brilliant – then as now

Inspired by the desire for a unique and vital copy of nature's own creation, the internationally renowned dental technician Willi Geller created a metal and ceramics range in 1988 which made quite a splash: **perfect, almost natural restorations** became possible all at once – masterly in their physical properties and reliable and reproducible in terms of shading. With Creation, each tooth was suddenly able to retain its own character – in shade, form and function

The new ceramic materials from Switzerland quickly set the trend for dental technology worldwide. Geller's "**master ceramics**" and his distinctive layering technique set benchmarks for a top-class dental aesthetic. Through the opportunity for ideal natural replicas, and through the seemingly **inexhaustible variety** of the metal and ceramics range, the dental technician gained an entirely new profile – the profile of an artist.

### Experience as a source of success

Founded as a "one-man company" 30 years ago, the dental company has continued to grow and develop steadily: new manufacturing technologies, additional fusions and effect materials, as well as **expanded indications and, more recently, a light-curing veneer composite with "Creation Brilliance"**. Today, Creation is one of the world's most important manufacturers of ambitious ceramics systems, and resin and composite teeth with a strong profile. The innovative ceramic and composite materials and denture teeth are successfully processed in over 70 countries **across the globe**. And the users are not the only ones who are impressed; dentists and patients are also convinced by our "Simply Brilliant" aesthetics concept.

**Willi Geller's dental creations represent the original – and are just as brilliant today.**

---

---

# Creation Highlights

---

---

## VENEERING CERAMIC Page

### Metal

Creation CC – Classic Metal Ceramic	05
Creation LF – Low-Fusing Metal Ceramic	10

### Zirconium

Creation ZI-CT – Zirconium Dioxide Ceramic	12
Creation ZI-F – Low-Fusing Zirconium Dioxide Ceramic	16

### Titanium

Creation TI – Titanium Ceramic	19
--------------------------------	----

---

## COLOURS Page

### CreaColor

Make up Neo	21
In Nova Neo	21

---

## PRESSABLE CERAMIC Page

### Classic

Creation CP – Classic Pressable Ceramic	22
---	----

---

## LIQUIDS Page

Modelling Liquid – High & Low Fusing	24
Opaque Liquid – High & Low Fusing	24
Shoulder Liquid	24
Universal & Glaze Liquid	25
Moisturing Fluid	25
In Nova Neo Fluid	25
Make up Neo Fluid	25
Make up Neo Reconditioner	25

---

## SHADE GUIDES Page

Creation Shade Guides	26
-----------------------	----

---

## CERAMIC ACCESSORIES Page

CreaPen-Separating Pen	28
Liquid Firing Pad	28
Creation Glass Plate	28
Creation Brush Kit	28
Aqualine master	29
Aqualine smart	29
Aqualine mini	29

---

---

## COMPOSITE Page

### Classic

Creation VC	31
-------------	----

---

---

## DENTURE TEETH Page

Creopal	39
Creapearl 2	44
Creapearl	48

---

---

## MERCHANDISING Page

Creation Sketch Pad	52
Creation Hand Towel	52
Creation Espresso Cup	52
Creation USB Stick	52

---

# CERAMIC

---

“Creation is the only eligible choice for a dental technician to create convincing, which means naturally appearing, restorations.”

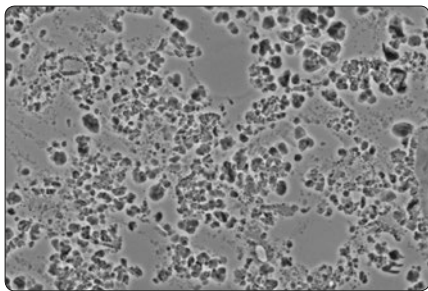
*Hubert Schenk*

---





REM-picture,  
etched, ceramic surface:



Leucite-reinforced metal ceramic CC

## CREATION CC – technically refined – inspired by nature

Better than ever, more brilliant than ever: Creation CC is a high-fusing metal ceramic with unique optical and physical properties that has developed constantly in line with growing aesthetic demands – **recognized worldwide for 30 years!**

The perfectly coordinated ceramic materials have excellent homogeneity and thus guarantee high flexural strength. The result: a densely sintered structure for **pure and non-porous layering** with the utmost reliability.

The pure potash feldspar with micro-pure leucite crystal structure in Creation CC creates iridescent light refraction and natural brilliance and enhances the strength. Exceptional colour nuances can additionally be created with the unique effect materials.

The ceramic bonder Crea Alloy Bond also acts as a CTE buffer between metal and ceramic – for improved adhesive properties to non-precious metal and greater colour reliability.

With the modular classic brand Creation CC, metal-ceramic restorations can be produced with impressive aesthetics and dimensional stability – for **superb dental artistry!**

**Creation CC – natural brilliance and efficiency.**



## THE BRILLIANCE OF CREATION CC:

- Unique, lifelike aesthetics thanks to highly pure potash feldspar
- Resilience due to consistently high flexural strength
- Natural colour effect and light dynamics due to leucite crystals
- Ease of handling thanks to consistent colour and layering system
- Processing reliability since 1988

---

## 6 Creation CC – Classic Metal Ceramic

---



CC Creapast Kit | 000300  
*Complete paste opaques with modifier*

- 16 Opaque O-A1-D4 . . . . . 3g
- 5 Opaque Dentine Modifier . 3g
- 1 Creapast Brush
- 1 CC Manual



CC Opaque Kit | 000800  
*Complete powder opaques with modifier*

- |                                 |                  |
|---------------------------------|------------------|
| 16 Opaque O-A1-D4 . . . . . 20g | 1 Shade Guide    |
| 8 Opaque Modifier               | 1 CC Color Chart |
| OM-11-17, G . . . . . 15g       | 1 CC Manual      |
| 1 Foundation Opaque             |                  |
| FOP . . . . . 20g               |                  |
| 2 Opaque Liquid OL-H . . 50ml   |                  |
| 1 Universal & Glaze Liquid 25ml |                  |



CC Kit 1 | 000804  
*Basic porcelains kit (opaque dentines, dentines, incisors)*

- |                                  |                                 |
|----------------------------------|---------------------------------|
| 16 Opaque Dentine                | 2 Modelling Liquid ML-H . 50ml  |
| OD-A1-D4 . . . . . 15g           | 1 Universal & Glaze Liquid 25ml |
| 16 Dentine D-A1-D4 . . . . . 20g | 2 Shade Guides                  |
| 4 Enamel E-57-60 . . . . . 20g   | 1 CC Color Chart                |
| 2 Transpa NT, OT . . . . . 20g   | 1 CC Manual                     |
| 1 Clear CL-O . . . . . 20g       |                                 |
| 1 Glaze GL . . . . . 10g         |                                 |



CC Kit 2 | 001508  
*Effect porcelains kit*

- |                                |                                 |
|--------------------------------|---------------------------------|
| 5 Opaque Dentine               | 4 Pearl Enamel PS-0-3 . . 20g   |
| OD-32, 37, 41, 43, 44 . . 15g  | 6 Neck Transpa HT-51-56 15g     |
| 1 Dentine D-CW . . . . . 20g   | 6 Make In MI-61-66 . . . 15g    |
| 2 Approximal Dentine           | 1 Correction Powder KM . . 20g  |
| AD-1, 2 . . . . . 15g          | 2 Modelling Liquid ML-H 50ml    |
| 1 Clear UC . . . . . 20g       | 1 Universal & Glaze Liquid 25ml |
| 5 Transpa TI-1-5 . . . . . 20g | 2 Shade Guides                  |
| 8 Effect Enamel                | 1 CC Color Chart                |
| SI-01-06, SO-10, 11 . . . 20g  | 1 CC Manual                     |



### CC Bleach Shades Kit | 000250

*Complete bleach shades colours*

- |                                 |                                   |
|---------------------------------|-----------------------------------|
| 1 Bleach Creapast Opaque        | 1 Shoulder Liquid . . . . . 25 ml |
| O-AB . . . . . 3 g              | 1 Modelling Liquid ML-H . 25 ml   |
| 3 Bleach Dentine                | 1 Bleach Shade Guide              |
| BD-A, B, BO . . . . . 20 g      | 1 CC Color Chart/Firing Chart     |
| 1 Bleach Enamel S-AB . . . 20 g |                                   |
| 1 Bleach Shoulder SP-AB . 15 g  |                                   |



### CC Gingiva Kit | 001590

*Complete gingiva colours*

- |                                 |                                 |
|---------------------------------|---------------------------------|
| 1 Creapast Opaque O-G. . . 3 g  | 1 Opaque Liquid OL-H . . 25 ml  |
| 1 Opaque Modifier OM-G . 15 g   | 1 Modelling Liquid ML-H . 25 ml |
| 8 Gingiva G1-7, N. . . . . 15 g | 1 Shade Guide                   |



### CC Shoulder Kit | 001503

*Complete shoulder porcelains*

- |                                   |
|-----------------------------------|
| 10 Shoulder Powder                |
| SP-21-29, G . . . . . 15 g        |
| 1 Shoulder Liquid . . . . . 25 ml |
| 1 CC Color Chart/Firing Chart     |



### CC Transition Dentine Kit | 000801

*Basic porcelains kit (transition dentines, incisals)*

- |                                 |                                  |
|---------------------------------|----------------------------------|
| 16 Opaque Dentine               | 2 Modelling Liquid ML-H . 50 ml  |
| OD-A1-D4 . . . . . 15 g         | 1 Universal & Glaze Liquid 25 ml |
| 16 Transition Dentine           | 1 Shade Guide                    |
| TD-A1-D4 . . . . . 20 g         | 1 CC Color Chart                 |
| 4 Enamel E-57-60 . . . . . 20 g | 1 CC Manual                      |
| 1 Clear CL-O . . . . . 20 g     |                                  |
| 2 Transpa NT, OT . . . . . 20 g |                                  |
| 1 Glaze GL . . . . . 10 g       |                                  |

---

## 8 Creation CC – Classic Metal Ceramic

---



### CC Starter Kit | 000915

*Introduction kit with tooth shades A2, A3, A3.5, B2, B3*

2 Crea Alloy Bond . . . . .	4g	5 Transpa NT, OT,	
5 Creapast Opaque. . . . .	3g	TI-1, 4, 5 . . . . .	20g
5 Opaque Dentine . . . . .	15g	2 Effect Enamel SI-02, 04 .	20g
3 Opaque Dentine		3 Neck Transpa HT-52–54	15g
OD-32, 37, 43 . . . . .	15g	1 Glaze GL . . . . .	10g
5 Dentine . . . . .	20g	2 Make In MI-63, 65 . . . .	15g
2 Enamel E-58, 59 . . . . .	20g	2 Modelling Liquid ML-H .	25ml
1 Clear CL-O . . . . .	20g	2 Universal & Glaze Liquid	25ml
		1 CC Manual	



### CC Introduction Kit | 000920

*Introduction kit with tooth shades A1, A2, A3, A3.5, B1, B2, C1, C2, C3, D2, D3*

11 Creapast Opaque. . . . .	3g	3 Effect Enamel	
3 Opaque Dentine		SI-02, 04, SO-10 . . . . .	20g
OD-32, 37, 43 . . . . .	15g	1 Pearl Enamel PS-1 . . . .	20g
11 Dentine . . . . .	20g	3 Neck Transpa HT-52–54	15g
4 Enamel E-57–60 . . . . .	20g	1 Glaze GL . . . . .	10g
1 Clear CL-O . . . . .	20g	1 Modelling Liquid ML-H .	50ml
4 Transpa NT, TI-1, 2, 4 . .	20g	1 Universal & Glaze Liquid	25ml
		1 CC Color Chart & CC Manual	

### Crea Alloy Bond | 000080

Crea Alloy Bond is a bonding agent which was specially developed for neutralising leaking metallic oxides. At the same time it acts as an efficient CTE buffer between porcelain and metal alloy.



- Safety owing to high flexural strength (70 MPa)
- No marginal discolorations – staining metallic oxides are neutralised
- Greater colour reliability because of the golden yellow undertone
- Compatible with all materials from Creation CC and LF

### WOP Opaque

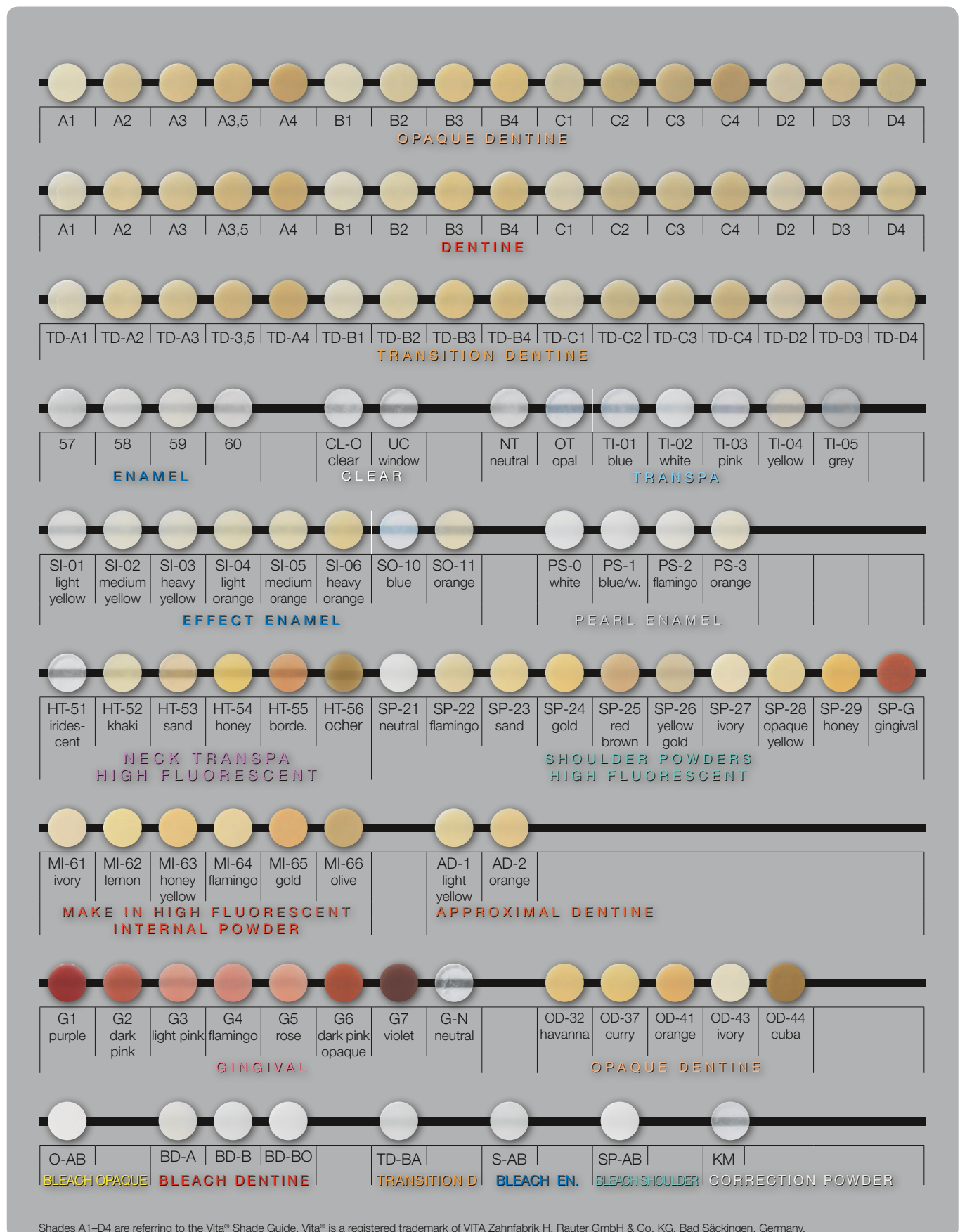
The coating of opaque can be carried out at only 950 °C instead of 980 °C with the WOP paste. This procedure is useful with certain high-gold alloys and galvanised frameworks. After the WOP coating the second coating of opaque is applied.



- Firing temperature 950 °C

CC Creapast WOP sand . . . . .	3g	000322
CC Creapast WOP sahara . . . . .	3g	000323
CC Creapast WOP gold . . . . .	3g	000324







---

## 10 Creation LF – Low-Fusing Metal Ceramic

---



### CREATION LF – low fusion point and highest quality

**Versatile and multi-layered:** the Creation LF system is ideally suited to veneering all bio- and gold cast alloys in the conventional CTE range. The low-fusing metal ceramic is also an excellent choice as a layering material for the modern pressed ceramics from Creation (Creation CP) – for **more added value in the laboratory**.

In addition, the easy-to-process ceramic materials can be used as an add-on material for the Creation CC system.

Creation LF impresses not only with its versatile range of indications but also its **extremely natural colour brilliance**.

**Creation LF – even more impact in LF metal-ceramic.**

### THE BRILLIANCE OF CREATION LF:

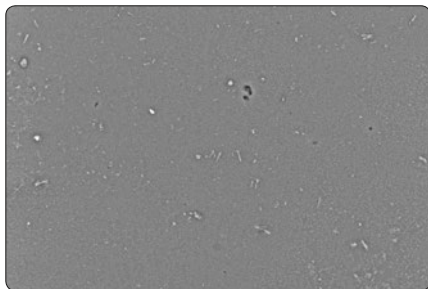
- Low firing temperature (770 °C) for yellow metal-to-ceramic alloys
- Safety owing to high flexural strength
- Natural abrasion behaviour
- Rational working because easy to grind and polish
- Improved colour brilliance due to individual colour effects with the CreaColor system



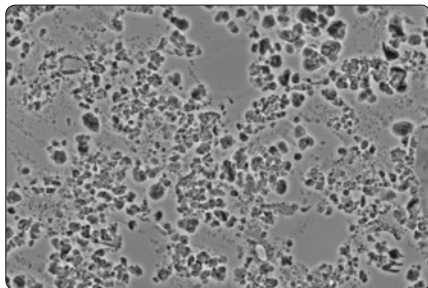
## 12 Creation ZI-CT – Zirconium Dioxide Ceramic



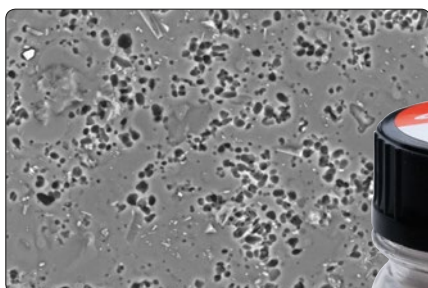
REM-pictures  
etched, ceramic surfaces:



Glass ceramic



Leucite-reinforced metal ceramic CC



Leucite-reinforced  
zirconium dioxide ceramics ZI-CT



### CREATION ZI-CT – the fine art of ceramics

Creation ZI-CT is an innovative feldspar ceramic containing leucite crystals which is precisely matched to the CTE of all high-strength zirconium dioxide frameworks and structures – whether white, coloured or translucent.

The high proportion of pure potash feldspars creates light scatter that is comparable to that of natural teeth and a **brilliant colour effect**, while the micro-fine leucite crystals improve mechanical strength and thereby ensure a **durable ceramic structure**.

Fascinatingly fluorescent: the special bonding agent Frame Shade NT guarantees strong adhesion to the zirconium dioxide framework and also increases its fluorescence – for **powerful bond strength** without tensile stresses. Using the complementary CreaColor ceramic stains and modifiers, individual nuances can be created rapidly and effortlessly.

The modular Creation ZI-CT allows restorative work on zirconium dioxide with impressive colour and dimensional stability and with **brilliant light reflection and dynamics**.

High-fusing, high aesthetics, high stability: Creation ZI-CT.

*“Unobtrusively beautiful – a true Creation!”*

*Andreas Nolte, MDT*

### THE BRILLIANCE OF CREATION ZI-CT

- Natural colour effect and light dynamics due to leucite crystals
- Excellent bonding strength thanks to high firing temperature of 910 °C
- Extremely low shrinkage for fewer correction firings and more efficiency
- Reliability due to homogeneous crystalline structure and high resilience
- Processing reliability based on more than ten years of zirconium expertise





### ZI-CT Kit 1 | 620501

*Basic porcelains kit (dentines, incisors)*

- |  |                                   |
|--|-----------------------------------|
| 1 Frame Shade NT . . . . . 4g                      | 1 Correction Powder KM . 20g      |
| 5 Opaque Dentine<br>OD-32, 37, 41, 43, 44. . . 15g | 1 Glaze GL . . . . . 10g          |
| 16 Dentine D-A1–D4. . . . . 20g                    | 1 Universal & Glaze Liquid . 25ml |
| 4 Enamel E-57–60 . . . . . 20g                     | 2 Modelling Liquid ML-H . 50ml    |
| 1 Clear CL-O . . . . . 20g                         | 1 ZI-CT Color Chart & Manual      |
| 2 Transpa NT, OT . . . . . 20g                     |                                   |
| 2 Approximal Dentine<br>AD-1, 2. . . . . 15g       |                                   |



### ZI-CT Kit 2 | 620502

*Effect porcelains kit*

- |   |                                   |
|---|-----------------------------------|
| 1 Clear UC . . . . . 20g                        | 1 Universal & Glaze Liquid . 25ml |
| 5 Transpa TI-1–5. . . . . 20g                   | 2 Modelling Liquid ML-H . 50ml    |
| 8 Effect Enamel<br>SI-01–06, SO-10, 11. . . 20g | 1 ZI-CT Color Chart & Manual      |
| 4 Pearl Enamel PS-0–3. . . 20g                  |                                   |
| 6 Neck Transpa<br>HT-51–56. . . . . 15g         |                                   |
| 6 Make In MI-61–66 . . . . 15g                  |                                   |



### ZI-CT Starter Kit | 620503

*Introduction kit with tooth shades A1, A2, A3, A3.5, B2, B3*

- |   |                                   |
|---|-----------------------------------|
| 1 Frame Shade NT . . . . . 4g                   | 1 Pearl Enamel PS-0. . . . . 20g  |
| 3 Opaque Dentine<br>OD-32, 37, 43 . . . . . 15g | 3 Neck Transpa HT-52–54 . 15g     |
| 6 Dentine . . . . . 20g                         | 3 Shoulder SP-21, 23, 28 . 15g    |
| 2 Enamel E-58, 59 . . . . . 20g                 | 2 Make In MI-63, 65 . . . . 15g   |
| 1 Clear CL-O . . . . . 20g                      | 1 Glaze GL . . . . . 10g          |
| 6 Transpa NT, OT<br>TI-1, 3–5 . . . . . 20g     | 2 Modelling Liquid ML-H . 25ml    |
| 2 Effect Enamel SI-02, 04 . 20g                 | 1 Shoulder Liquid . . . . . 25ml  |
|   | 1 Universal & Glaze Liquid . 25ml |
|   | 1 ZI-CT Color Chart & Manual      |



### ZI-CT Introduction Kit | 620506

*Introduction kit with tooth shades A1, A2, A3, A3.5, B1, B2, C1, C2, C3, D2, D3*

- |   |   |
|---|---|
| 1 Frame Shade NT . . . . . 4g                   | 1 Pearl Enamel PS-0. . . . . 20g        |
| 3 Opaque Dentine<br>OD-32, 37, 43 . . . . . 15g | 3 Neck Transpa<br>HT-52–54. . . . . 15g |
| 11 Dentine . . . . . 20g                        | 1 Glaze GL . . . . . 10g                |
| 1 Clear CL-O . . . . . 20g                      | 2 Modelling Liquid ML-H . 50ml          |
| 4 Enamel E-57–60 . . . . . 20g                  | 1 Universal & Glaze Liquid . 25ml       |
| 4 Transpa NT, TI-1, 3, 4 . . 20g                | 1 ZI-CT Color Chart & Manual            |
| 1 Effect Enamel SO-10 . . . 20g                 |   |

---

## 14 Creation ZI-CT – Zirconium Dioxide Ceramic

---



ZI-CT Bleach Shades Kit | 620505  
*Complete bleach shades colours*

- 3 Bleach Dentine  
BD-A, B, BO . . . . . 20g
- 1 Bleach Enamel S-AB . . . 20g
- 1 Shoulder SP-AB. . . . . 15g
- 1 Modelling Liquid ML-H 25ml
- 1 Shoulder Liquid . . . . . 25ml
- 1 ZI-CT Color Chart



ZI-CT Gingiva Kit | 620504  
*Complete gingiva colours*

- 8 Gingiva G1–7, N. . . . . 15g
- 1 Modelling Liquid ML-H 25ml
- 1 ZI-CT Color Chart  
Bleach & Gingiva



ZI-CT Shoulder Kit | 620507  
*Complete shoulder porcelains*

- 10 Shoulder  
SP-21–29, G . . . . . 15g
  - 1 Shoulder Liquid . . . . . 25ml
  - 1 ZI-CT Color Chart/Firing Chart
-



A1	A2	A3	A3,5	A4	B1	B2	B3	B4	C1	C2	C3	C4	D2	D3	D4
DENTINE															
57	58	59	60		CL-O clear	UC window		NT neutral	OT opal	TI-01 blue	TI-02 white	TI-03 pink	TI-04 yellow	TI-05 grey	
ENAMEL				CLEAR				TRANSPA							
SI-01 light yellow	SI-02 medium yellow	SI-03 heavy yellow	SI-04 light orange	SI-05 medium orange	SI-06 heavy orange	SO-10 blue	SO-11 orange		PS-0 white	PS-1 blue/w.	PS-2 flamingo	PS-3 orange			
EFFECT ENAMEL						PEARL ENAMEL									
HT-51 iridescent	HT-52 khaki	HT-53 sand	HT-54 honey	HT-55 borde.	HT-56 ocher	SP-21 neutral	SP-22 flamingo	SP-23 sand	SP-24 gold	SP-25 red brown	SP-26 yellow gold	SP-27 ivory	SP-28 opaque yellow	SP-29 honey	
NECK TRANSPA HIGH FLUORESCENT						SHOULDER POWDERS HIGH FLUORESCENT									
MI-61 ivory	MI-62 lemon	MI-63 honey yellow	MI-64 flamingo	MI-65 gold	MI-66 olive		AD-1 light yellow	AD-2 orange							
MAKE IN HIGH FLUORESCENT INTERNAL POWDER						APPROXIMAL DENTINE									
G1 purple	G2 dark pink	G3 light pink	G4 flamingo	G5 rose	G6 dark pink opaque	G7 violet	G-N neutral		OD-32 havanna	OD-37 curry	OD-41 orange	OD-43 ivory	OD-44 cuba		
GINGIVAL							OPAQUE DENTINE								
BD-A	BD-B	BD-BO		S-AB	SP-AB	KM									
BLEACH DENTINE				BLEACH EN.		BLEACH SHOULDER		CORRECTION POWDER							

---

# 16 Creation ZI-F – Low-Fusing Zirconium Dioxide Ceramic

---



## CREATION ZI-F – naturally brilliant – brilliantly natural

Creation ZI-F is a tried and tested zirconium dioxide ceramic. It is perfectly suited to veneering any kind of zirconium dioxide framework.

At the same time, the modular materials are also an ideal choice as **add-on materials** for Creation ZI-CT because their firing temperature is about 100°C lower than the high-fusing zirconium dioxide veneering ceramic.

Creation ZI-F is an **extremely versatile** zirconium dioxide ceramic with high **natural light reflection**, combined with all the material-related advantages of zirconium dioxide.

With the unique effect materials, exceptional colour nuances can also be created rapidly and comfortably – for maximum impact with minimum effort.

### Creation ZI-F – natural light dynamics!



#### ZI-F Kit 1 | 653010

*Basic porcelains kit (dentines, incisals)*

- |   |                                  |
|---|----------------------------------|
| 5 Frame Shade                                 | 2 Modelling Liquid ML-L . 50 ml  |
| FS-1–4, IL . . . . . 10 g                     | 1 Universal & Glaze Liquid 25 ml |
| 16 Dentine D-A1–D4 . . . . . 20 g             | 2 Shade Guides                   |
| 4 Enamel E-57–60 . . . . . 20 g               | 1 ZI-F Color Chart               |
| 2 Clear CL-O, UC . . . . . 20 g               | 1 ZI-F Manual                    |
| 6 Transpa NT, OT,<br>TI-1, 3–5 . . . . . 20 g |                                  |
| 1 Glaze GL . . . . . 10 g                     |                                  |



#### ZI-F Kit 2 | 653015

*Effect porcelains kit*

- |                                  |                                   |
|----------------------------------|-----------------------------------|
| 5 Opaque Dentine                 | 2 Approximal Dentine              |
| OD-32, 37, 41, 43, 44 . . 15 g   | AD-1, 2. . . . . 15 g             |
| 5 Effect Enamel                  | 1 Shoulder Liquid . . . . . 25 ml |
| SI-02, 04, 06, SO-10, 11 20 g    | 2 Modelling Liquid ML-L . 25 ml   |
| 2 Pearl Enamel PS-0, 3 . . 20 g  | 1 Universal & Glaze Liquid 25 ml  |
| 3 Neck Transpa HT-52–54 15 g     | 2 Shade Guides                    |
| 5 Shoulder SP-22–25, 28 . 15 g   | 1 ZI-F Color Chart                |
| 3 Make In MI-61, 63, 65 . . 15 g | 1 ZI-F Manual                     |
|                                  | 1 ZI-F Color Chart/Firing Chart   |



### ZI-F Bleach Shades Kit | 652050

*Complete bleach shades colours*

- |                                |                                   |
|--------------------------------|-----------------------------------|
| 1 Bleach Frame Shade           | 1 Shoulder Liquid . . . . . 25 ml |
| FS-AB . . . . . 10 g           | 1 Modelling Liquid ML-L . 25 ml   |
| 3 Dentine BD-A, B, BO . . 20 g | 1 Shade Guide                     |
| 1 Enamel E-AB . . . . . 20 g   | 1 ZI-F Color Chart/Firing Chart   |
| 1 Bleach Shoulder SP-AB . 15 g |                                   |



### ZI-F Gingiva Kit | 603030

*Complete gingiva colours*

- |                                  |
|----------------------------------|
| 1 Frame Shade FS-G . . . . 10 g  |
| 8 Gingiva G1-7, N . . . . . 15 g |
| 1 Modelling Liquid ML-L . 25 ml  |
| 1 Shade Guide                    |



### ZI-F Starter Kit | 653025

*Introduction kit with tooth shades A1, A2, A3, A3.5, B2, B3*

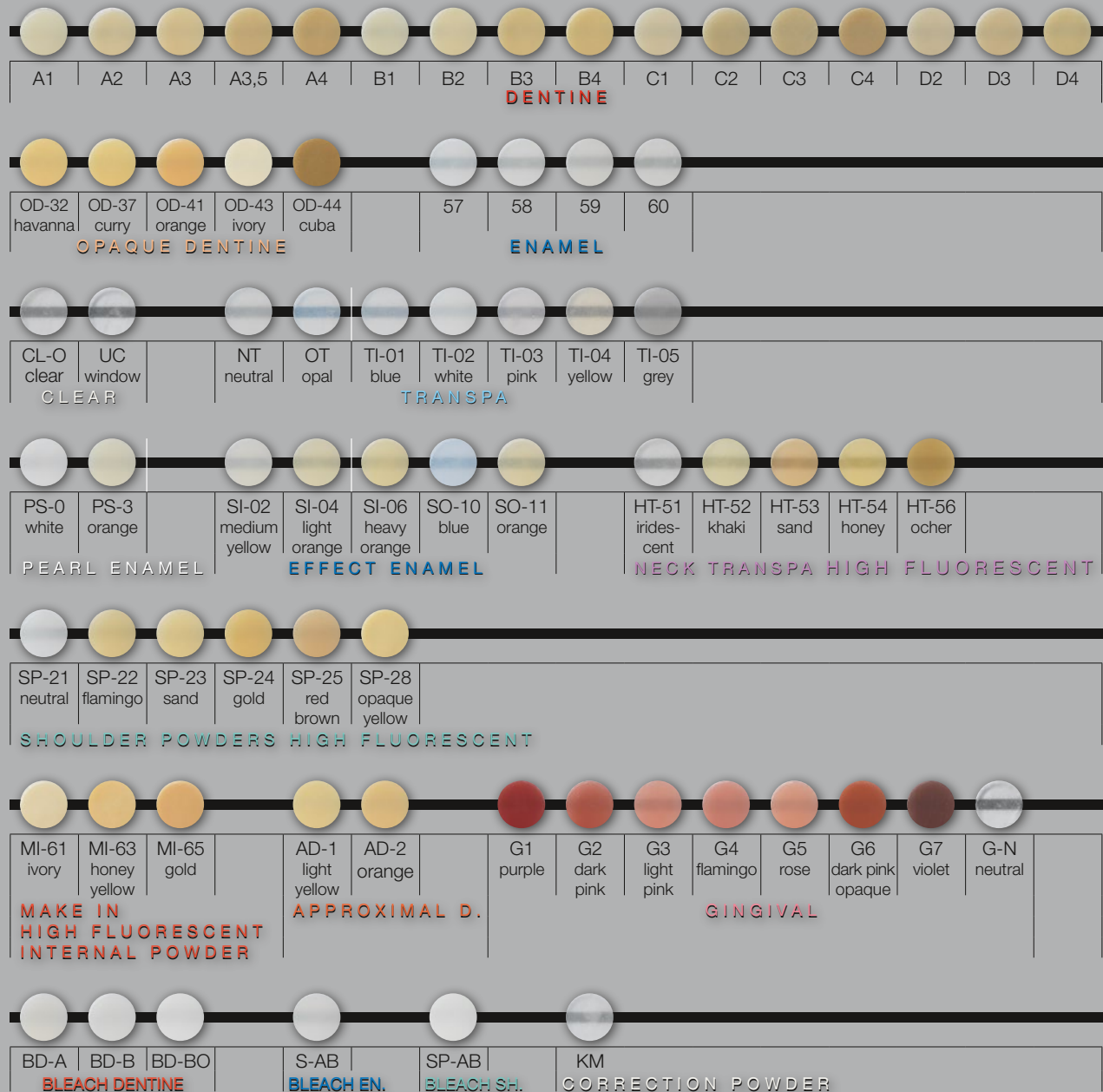
- |                                   |                                   |
|-----------------------------------|-----------------------------------|
| 2 Frame Shade FS-1, 2 . . . 10 g  | 3 Neck Transpa HT-52-54 15 g      |
| 3 Opaque Dentine                  | 3 Shoulder SP-22, 23, 28 . 15 g   |
| OD-32, 37, 43 . . . . . 15 g      | 2 Make In MI-63, 65 . . . . 15 g  |
| 6 Dentine . . . . . 20 g          | 1 Glaze GL . . . . . 10 g         |
| 2 Enamel E-58, 59 . . . . . 20 g  | 1 Shoulder Liquid . . . . . 25 ml |
| 1 Clear CL-O . . . . . 20 g       | 2 Modelling Liquid ML-L . 25 ml   |
| 6 Transpa NT, OT, TI-1, 3-5 20 g  | 1 Universal & Glaze Liquid 25 ml  |
| 2 Effect Enamel SI-02, 04 . 20 g  | 1 ZI-F Color Chart                |
| 1 Pearl Enamel PS-02 . . . . 20 g | 1 ZI-F Manual                     |

### ZI-F Single Products



- |                       |                       |
|-----------------------|-----------------------|
| Frameshade FS-NT      | 601087 . . . . . 4 g  |
| Shoulder Powder SP-21 | 602121 . . . . . 15 g |
| Transpa TI-2          | 652077 . . . . . 20 g |
| Neck Transpa HT-51    | 652151 . . . . . 15 g |
| Neck Transpa HT-56    | 652156 . . . . . 15 g |
| Correction Powder KM  | 652090 . . . . . 20 g |

# 18 Creation ZI-F – Color Chart





## CREATION TI – tough and brilliant colour

Creation TI is a porcelain for veneering of titanium frameworks. It impresses with high strength at low density and with excellent colour, dimensional and firing stability – even after multiple firings. The physical properties of Creation TI are specially matched to the framework material titanium and suited to its coefficient of thermal expansion. With a maximum of 810°C, the firing temperatures harmonise perfectly with the titanium-specific properties.

With a **flexural strength of approx. 80 MPa** Creation TI is extremely stable. And thanks to the **all-purpose bonder Crea TI Bond** bonding strengths are reached which are more than 30 % above the recommended ISO limit – as a result porcelain flaws are virtually ruled out.

The aesthetics are just right too: Creation TI in the fired state has a **non-porous microstructure** and hence a **brilliant colour effect**.

Creation TI – tailor-made to meet the highest demands.

## THE BRILLIANCE OF CREATION TI:

- Increased bonding strength to the framework owing to Crea TI Bond
- Brilliant colour effect due to non-porous microstructure
- Economical and easy handling because colour build-up is the same as for all Creation systems
- High firing stability even after multiple firings



## TI Starter Kit | 803020

Introduction kit with tooth shades A2, A3, A3.5, B2, B3

1 Crea TI Bond . . . . .	4g	2 Effect Enamel SI-02, 04 . . . . .	20g
5 Opaque . . . . .	20g	3 Neck Transpa HT-52–54 . . . . .	15g
3 Opaque Dentine . . . . .		2 Make In MI-63, 65 . . . . .	15g
OD-32, 37, 41 . . . . .	15g	1 Glaze GL . . . . .	10g
5 Dentine . . . . .	20g	1 Bonder Liquid . . . . .	25ml
2 Enamel E-58, 59 . . . . .	20g	1 Opaque Liquid OL-L . . . . .	25ml
1 Clear CL-O . . . . .	20g	1 Modelling Liquid ML-L . . . . .	25ml
5 Transpa NT, OT . . . . .		1 Universal & Glaze Liquid . . . . .	25ml
TI-1, 4, 5 . . . . .	20g	1 TI Color Chart & Manual . . . . .	





### CREACOLOR – stains and modifiers for all ceramics

CreaColor is a complete **“two in one” colour system** which can be used to place individual colour nuances simply and efficiently **for all ceramic surfaces and materials** – whether by the internal or external staining technique.

The physical properties of the **high-quality stains and modifiers** are so perfectly matched to the ceramic surfaces and materials that they can be worked universally with all layering and pressed ceramics, pressed or fired dentine cores as well as zirconium dioxide frames – after all, **colour creativity should be unlimited!** Furthermore, the new stains are extremely fine-grained and fluorescent and they can readily be mixed with each other.

CreaColor is made up of two components:

- CreaColor Make up Neo
- CreaColor In Nova Neo

### THE BRILLIANCE OF CREACOLOR:

- Utmost colour brilliance for internal and external colouring
- Versatile and efficient: one system for all ceramics
- High colour accuracy and fidelity thanks to high-quality materials
- Natural colour effect due to very high fluorescence values
- Easy to handle: can be mixed with each other and can be corrected



CreaColor Kit | 001200  
Contains Make up Neo Kit & In Nova Neo Kit



### Make up Neo Kit | 001100

*Glazing and fluorescent stains*

- 13 Fluorescent Stain Glazes
  - MUN-F1–F13 ..... 4g
- 4 Dentine Shades MUN-FA–FD
  - in the four Vita® colour groups for colour corrections
  - and for painting onto press ingots ..... 4g
- 1 Fluorescent Glaze GL-F ..... 4g
- 1 Make up Neo Fluid ..... 25ml
- 1 Make up Neo Reconditioner Fluid ..... 8ml
  - (for freshening up concentrated stains)
- 1 Brush No. IV



### In Nova Neo Kit | 001150

*All-purpose modifiers*

- 10 Fluorescent Modifiers
  - INN-1–10. .... 3g
- 2 Effect Shades IL, CRL (Illusion and Crackliner)
  - for individual accents ..... 3g
- 1 In Nova Neo Fluid ..... 25ml
- 1 Brush No. IV

## CREACOLOR COLOR CHART

WILLI GELLER  
*Creation*

### MAKE UP NEO

MUN-F1 white	MUN-F2 eggshell	MUN-F3 lemon yellow	MUN-F4 mandarine	MUN-F5 flamingo	MUN-F6 apricot	MUN-F7 light brown	MUN-F8 medium brown	MUN-F9 olive	MUN-F10 red
MUN-F11 blue	MUN-F12 grey	MUN-F13 deep blue	MUN-FA stain A	MUN-FB stain B	MUN-FC stain C	MUN-FD stain D	MUN-GL-F Glaze	UF	Recon- ditioner

### IN NOVA NEO

INN-1 melone	INN-2 rose	INN-3 yellow	INN-4 red brown	INN-5 brown	INN-6 olive	INN-7 grey	INN-8 blue	INN-9 white	INN-10 mais	INN-CRL Crack- liner	INN-IL Illusion	INN- FLUID

## 22 Creation CP – Classic Pressable Ceramic



### CREATION CP – aesthetic, versatile and flexible

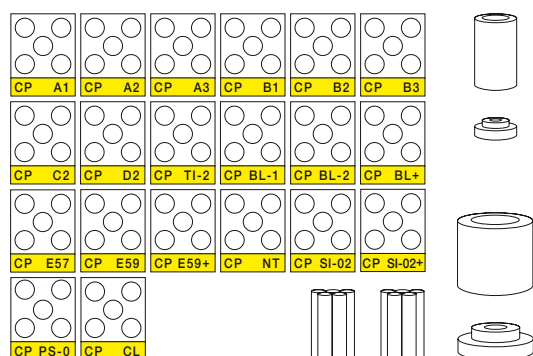
Creation CP is a pressable ceramic for fabricating inlays, onlays, veneers and single crowns – whether by the staining or build-up technique or a combination of both, or with Creation LF or CC.

**Brilliance and efficiency:** thanks to the high pressing temperature of 1050 °C and the **perfectly coordinated coefficients of thermal expansion** of the materials, Creation CP can be used both with the low-fusing Creation LF system and the tried and tested feldspar metal-ceramic Creation CC. This means: even aesthetically demanding all-ceramic crowns and veneers can now be achieved for the first time with high-fusing veneering porcelain!

**Combined work**, such as anterior teeth made of all-ceramic and posterior teeth with metal framework, are simply completed **with a veneering porcelain** – for optimum aesthetics without added outlay.

**Economical** yet high quality: in the **staining technique** the pressed frameworks are coloured with the Make up Neo stains – by internal colouring on the dentine core or by surface staining. For aesthetically demanding work, the leucite-reinforced pressed ceramic framework can also be added to by using the **build-up technique**, followed by **high-fusing or low-fusing veneering**.

**Creation CP – limitless possibilities and colour brilliance!**



### CP Starter Kit | 700100 Complete kit

8 Dentine . . . . .	5 x 2 g	1 Mould Set, small (100g)
3 Bleach . . . . .	5 x 2 g	1 Mould Set, large (200g)
7 Enamel . . . . .	5 x 2 g	10 Disposable Plunger
1 Neutral NT . . . . .	5 x 2 g	
1 Clear CL . . . . .	5 x 2 g	



---

## 24 Creation Liquids

---

**Fewer bottles – more simplicity and efficiency:** For more clarity and space on the laboratory table, Creation liquids can be obtained in high fusion or low fusion versions.



### Modelling Liquid – High & Low Fusing

Standard modelling liquid for mixing Creation ceramics except for shoulder ceramics (SP).

- ML-H (High) for high fusion ceramics Creation CC and ZI-CT
- ML-L (Low) for low fusion ceramics Creation ZI-F, LF and TI

Modelling Liquid High Fusing . . . . . 25 ml | 000012  
Modelling Liquid High Fusing . . . . . 50 ml | 000013  
Modelling Liquid High Fusing . . . . . 250 ml | 000014  
Modelling Liquid High Fusing . . . . . 1,000 ml | 000015

Modelling Liquid Low Fusing . . . . . 25 ml | 000016  
Modelling Liquid Low Fusing . . . . . 50 ml | 000017  
Modelling Liquid Low Fusing . . . . . 250 ml | 000018



### Opaque Liquid – High & Low Fusing

Mixing liquid for Creation powder opaques, divided into high fusion (OL-H) and low fusion (OL-L) ceramics.

- OL-H for high fusion ceramic Creation CC
- OL-L for low fusion ceramics Creation LF and TI

Opaque Liquid High Fusing . . . . . 25 ml | 000019  
Opaque Liquid High Fusing . . . . . 50 ml | 000020  
Opaque Liquid High Fusing . . . . . 250 ml | 000021

Opaque Liquid Low Fusing . . . . . 25 ml | 000022  
Opaque Liquid Low Fusing . . . . . 50 ml | 000023  
Opaque Liquid Low Fusing . . . . . 250 ml | 000024



### Shoulder Liquid

Universal modelling liquid for mixing all SP shoulder ceramics from Creation.

Shoulder Liquid . . . . . 25 ml | 000025  
Shoulder Liquid . . . . . 50 ml | 000026





### Universal & Glaze Liquid

Additional universal liquid with a wide range of uses.

- Addition of a very small amount into the ceramic mixed with ML enhances the smoothness
- The pre-drying time must be extended during firing
- Mixing all Creation glazing materials and CreaColor colours  
In Nova Neo and Make up Neo
- Remoistening of Creapast

Universal & Glaze Liquid . . . . . 25 ml | 000010

Universal & Glaze Liquid . . . . . 50 ml | 000011



### Moisturing Fluid

For extensive restorations and complex corrections, as a moisturiser for the applied ceramics.

- No more drying out, the ceramics remain consistently modellable
- Efficient and simple: one fluid for all ceramics
- Longer working time for mixed materials – especially for sizeable work
- Targeted application due to controllable moisture content

Moisturing Fluid . . . . . 25 ml | 000090



### In Nova Neo Fluid

Mixing liquid for In Nova Neo.

In Nova Neo Fluid . . . . . 25 ml | 001163



### Make up Neo Fluid

Mixing liquid for Make up Neo.

Make up Neo Fluid . . . . . 25 ml | 001125

### Make up Neo Reconditioner

For freshening up concentrated stains.

Make up Neo Reconditioner . . . . . 8 ml | 001126

## 26 Creation Shade Guides

### KIT-BASED SHADE GUIDES

Art. no.	Article name
000064	CC/Shade Guide Kit 1 804
000073	CC/Shade Guide Kit 2 1508
000076	ZI-F.LF.TI/Shade Guide Kit 1 (28 Shades)
000077	ZI-F.LF.TI/Shade Guide Kit 2 (26 Shades)
000087	CC/Shade Guide Transition Dentine
000092	ZI-CT/Shade Guide Kit 1
000093	ZI-CT/Shade Guide Kit 2
700015	CP/Shade Guide

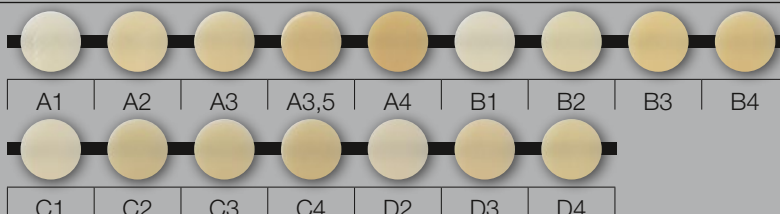
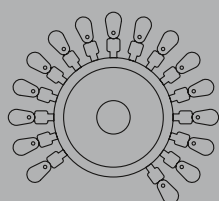
### SHADE GUIDES

Shades A1–D4 are referring to the Vita® Shade Guide.

Vita® is a registered trademark of VITA Zahnfabrik H. Rauter GmbH & Co. KG, Bad Säckingen, Germany.

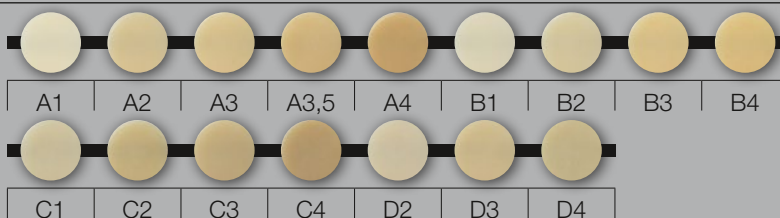
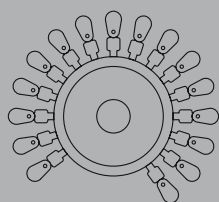
#### Shade Guide Dentine A - D

Art. no. 000040



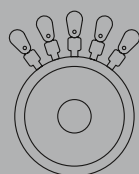
#### Shade Guide Opaque Dentine A - D

Art. no. 000041



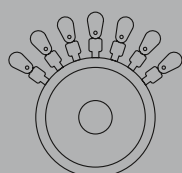
#### Shade Guide Transpa

Art. no. 000042



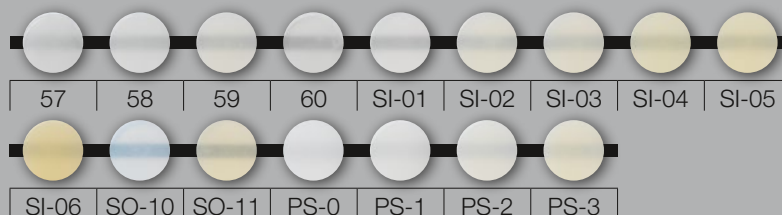
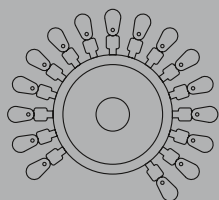
#### Shade Guide Opaque Dentine + AD

Art. no. 000043



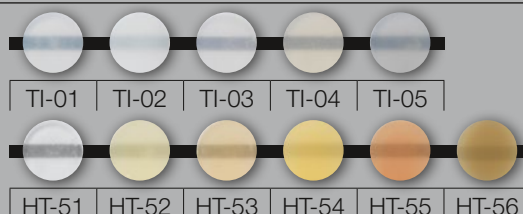
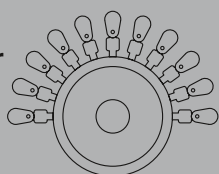
Shade Guide  
**Enamel**

Art. no. 000044



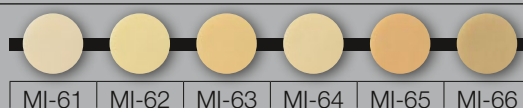
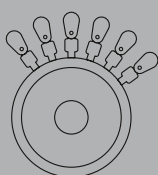
Shade Guide  
**Transpa Modifier**

Art. no. 000045



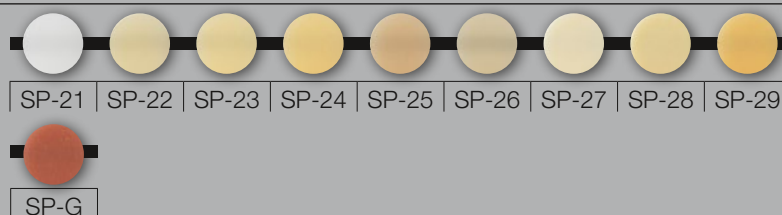
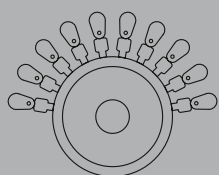
Shade Guide  
**Make In**

Art. no. 000046



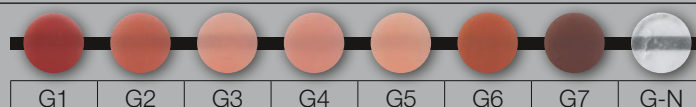
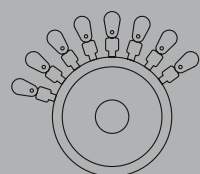
Shade Guide  
**Shoulder**

Art. no. 000047



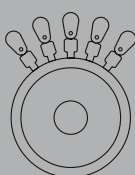
Shade Guide  
**Gingiva**

Art. no. 000048



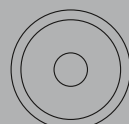
Shade Guide  
**Bleach**

Art. no. 000049



Shade Guide  
**Wheel Empty**

Art. no. 000091



Shade Guide  
**Single Shade Tab**

Art. no. 000058 + Color description



---

## 28 Ceramic Accessories

---



### CreaPen Separating Pen

The double-ended ceramic insulation pen with one pointed and one broad nib for surfaces or grooves respectively can be simply used on the sealed die.

CreaPen Separating Pen | 000059



### Liquid Firing Pad

The liquid firing pad for all Creation systems precisely fixes the object on the fireproof tray.

- Stable hold on the firing tray
- Easy to handle because of proven dispenser design
- Safe because of firing stability and optimum heat/warmth build-up onto the object
- Economical because of precise measuring
- Can be used for all Creation systems
- Tough and easy to remove

Liquid Firing Pad | 000081



### Creation Glass Plate

The ceramic glass plate in solid ten millimetre thick glass provides an ideal working surface (300 x 160 mm) and comes at the sturdy weight of 1,200 g.

Creation Glass Plate | 000130

### Creation Brush Kit

The six different sizes of the first-class Kolinsky red sable brush with a heavy wooden holder perfectly meet all the requirements of layering techniques.

Creation Brush Kit | 000136

Brush No. I | 000131

Brush No. II | 000132

Brush No. III | 000133

Brush No. IV | 000134

Brush No. V | 000135

Brush Creapast No. VI | 000321

---





**aqua line**



### Aqualine Mixing Trays

With Aqualine, materials will always have the right viscosity. Drying out is prevented by the cellulose strips continuously absorbing liquid from the reservoir.

### Aqualine master

Dimension: 335 x 225 x 25 mm

Components: Tray with glass plate (light grey) and hinged cover, self-adhesive write-on labels, cellulose strips

Aqualine master . . . . . anthracite | AMA-001

Aqualine master . . . . . white | AMA-002

### Aqualine smart

Dimension: 260 x 170 x 32 mm

Components: Tray with glass plate (light grey) and hinged cover, self-adhesive write-on labels, cellulose strips

Aqualine smart . . . . . anthracite | AS-001

Aqualine smart . . . . . white | AS-002

### Aqualine mini

Dimension: 133 x 71 x 23 mm

Components: Tray with glass plate (light grey) and hinged cover, cellulose strips

Aqualine mini . . . . . anthracite | AM-001

## ACCESSORIES

### Aqualine master Glass Plate, printed

light grey. . . . . 1 piece | AP-010

### Aqualine master Cellulose Strips

40 pieces . . . . . AP-013

### Aqualine master Labels, self-adhesive

for stain . . . . . 5 pieces | AMA-018

for ceramic . . . . . 30 pieces | AMA-019

### Aqualine master/smart Stain Kit, made of porcelain

1 stain tray/1 mixing tray. . . . . AS-016

### Aqualine smart Glass Plate, printed

light grey. . . . . 1 piece | AS-010

### Aqualine smart Cellulose Strips

30 pieces . . . . . AS-012

### Aqualine mini Tray Box with stain tray, with 15 cavities

1 piece . . . . . AM-002

### Aqualine mini Cellulose Strips

40 pieces . . . . . AM-010

### Aqualine Pool Set

Dimension: 105 x 65 x 48 mm, rinsing cup 250 ml, sponge, sponge holder

transparent. . . . . AS-014

### Aqualine Pool Set Sponge

5 pieces . . . . . AS-015

### Aqualine Glass Care

2 x 30 ml . . . . . AC-001

### Aqualine Two in One Build up Liquid

500 ml . . . . . AC-002

# COMPOSITE

---

“Creation VC is an aesthetic combination offering us versatile solutions. At the same time it gives us complete freedom to create amazing results with relatively little effort, for all indications from the aesthetic temporary to the final work.”

*Hans-Joachim Lotz*

---



## CREATION VC – definitely aesthetic and versatile!

**Brilliant colours, natural light dynamic**, and high processing and system quality: Creation VC is the first light-curing composite system by Creation Willi Geller. Just like all of the ceramic and prosthetic ranges by the Austrian dental technician, it is technically refined and inspired by nature. The new micro-hybrid composite not only possesses unmatched durability and mechanical stability, but also well-balanced opalescence and translucence. Based on **hybrid MFR technology** and the **tried-and-tested colour coding concept**, it offers dental technicians a unique, versatile, colourfast and sturdy composite system, with a total of 102 individual porcelains in a user-friendly packaging concept. The **flow materials** are a particular highlight and can be processed almost like ceramic materials due to their excellent application and modelling properties, as well as the wide range of natural gingival shades and make-up stains – for vivid and effective **aesthetics in red and white!**

On the basis of a unique filler structure and the familiar colour and layer system used by ceramics specialists, natural analogue composite restoration with the tried-and-tested Creation brilliance is now possible.

Thanks to the non-adhesive consistency and balanced viscosity, the new composite material is ideal for modelling and can be polished to a fine shine.

The modular **Creation VC** complete system offers the dental technician a virtually unlimited number of colour and structural combinations, a wide spectrum of different consistencies and processing possibilities, and a customised portfolio of new technologies such as cuvette technology (pressing and injection methods), as well as compatibility with **Creopal Shell**.

**Creation VC – an expressive and high-performance composite system.**

## THE BRILLIANCE OF CREATION VC:

- Unique, natural-looking aesthetics due to microhybrid filler structure/hybrid MFR technology
- A wide variety of indications for metal-supported and metal-free indications
- Perfect, safe and co-ordinated combinations with Creopal Shells
- High mechanical strength
- Resilience through equally high resistance to bending
- Different viscosities
- Natural colour effect and light dynamics
- Safe processing and bonding thanks to latest generation primers

---

## 32 Creation VC

---

### VC Kit 1 | 820201

*Basic materials kit (opaques, opaque dentines, dentines, incisals)*

#### Amazingly simple and varied:

Beside 16 opaques, 5 opaque dentines and 16 standard dentines in high density colours, dental technicians also have 4 assigned incisal materials at their disposal for an individual aesthetic. In addition, the set contains a further 2 primers, a variety of accessories and 2 opaques:

**VC Base Opaque O-BO:** Paste opaque with excellent flow and light-curing qualities, also sets in undercuts for mechanical retentions, and provide a good primer.

**VC Cervical Opaque O-CO:** effectively prevents metal edges from showing through, directly applied after the VC Base Opaque. VC Cervical can also be used occlusally or lingually for intensifying, or mixed with the opaques.



1 Base Opaque O-BO. . . 2.4 ml	1 Air Protect . . . . . 10 ml
1 Cervical Opaque O-CO. 2.4 ml	1 Composite Primer . . . . . 3 ml
16 Opaque O-A1-D4 . . . . 2.4 ml	1 Metal Primer. . . . . 5 ml
5 Opaque Dentine	10 Disposable Palette
OD-32, 37, 41, 43, 44. . 2.9 ml	1 Mixing Pad
16 Dentine D-A1-D4 . . . . 2.9 ml	10 Brush Round, Size 1
4 Enamel E-57-60 . . . . . 2.9 ml	10 Brush Flat, Size 1
2 Syringe Plunger	2 Brush Holder
1 Separator. . . . . 5 ml	1 Brush No. 7
1 Diamond Polisher. . . . . 8 g	3 Instructions for use
	1 Manual

---

### VC Kit 1 Starter | 820206

*Introduction kit in the 5 most common base shades A2, A3, A3.5, B2, B3*

Besides 5 opaques, 3 opaque dentines and 5 standard dentines in high density colours, dental technicians also have 3 assigned incisal materials at their disposal for individual aesthetics. In addition, the set contains a variety of accessories and the Composite Primer.



5 Opaque	1 Air Protect . . . . . 10 ml
O-A2-A3.5, B2, B3 . . . 2.4 ml	1 Composite Primer . . . . . 3 ml
3 Opaque Dentine	10 Disposable Palette
OD-32, 37, 43 . . . . . 2.9 ml	1 Mixing Pad
5 Dentine	10 Brush Round, Size 1
D-A2-A3.5, B2, B3 . . . 2.9 ml	10 Brush Flat, Size 1
3 Enamel E-57-59 . . . . . 2.9 ml	2 Brush Holder
2 Syringe Plunger	1 Brush No. 7
1 Separator. . . . . 5 ml	3 Instructions for use
1 Diamond Polisher. . . . . 8 g	1 Manual



VC Kit 2 | 820202  
Effect porcelains kit

**A colour system, a layering concept and a ceramic-like feeling:**

The extension set offers dental technicians a wide spectrum for creating a natural look, using a variety of opalescent and translucent porcelains – even for very thin layer thicknesses. The **Flow porcelains** are a real highlight. With its unique filler technology, this fluid composite shows an extremely homogeneous distribution of ultra-fine particles within the matrix. The filler bonds perfectly to the matrix, guaranteeing a very high bonding strength. The excellent polishing qualities ensure that when this almost self-polishing material is used for long-term restorations, it will give off a shine that remains for a considerable period of time. The flow materials are outstandingly suited for bonding with the Creopal Shells, and promise a durable bond with stable colouring, thanks to the latest generation of primer (VC Composite Primer). Producing restorations in the injection technique as well as the classical layering of veneers and tabletops are only some of the possibilities for the universal use of the Flow porcelains.



- |                                    |                                  |
|------------------------------------|----------------------------------|
| 2 Pearl Enamel PS-1, 2 . . . 2.9ml | 2 Flow Opaque Dentine            |
| 3 Effect Enamel SI-01–03. 2.9ml    | OD-A2, A3 . . . . . 2ml          |
| 4 Transpa                          | 2 Flow Enamel EN-L, T . . . 2ml  |
| TI-01, 02, 04, 05 . . . . . 2.9ml  | 1 Composite Primer . . . . . 3ml |
| 3 Neck Transpa                     | 20 Dispensing Tips               |
| HT-52–54. . . . . 2.9ml            | 3 Instructions for use           |
| 9 Flow Dentine                     |                                  |
| BW, A1–3,5, B1–3, HT . . 2ml       |                                  |

VC Kit 2 Starter | 820207  
Effect porcelains introduction kit

A colour system, a layering concept and a ceramic-like feeling with a reduced selection of the most common shades – based on kit 1. Can be completed according to the requirements. The set offers dental technicians a wide spectrum for creating a natural look, using a variety of opalescent and translucent porcelains – even for very thin layer thicknesses. The **Flow porcelains** are a real highlight.



- |                                   |                                  |
|-----------------------------------|----------------------------------|
| 3 Effect Enamel SI-01–03. 2.9ml   | 2 Flow Opaque Dentine            |
| 4 Transpa                         | OD-A2, A3 . . . . . 2ml          |
| TI-01, 02, 04, 05 . . . . . 2.9ml | 1 Flow Enamel EN-L . . . . . 2ml |
| 3 Neck Transpa                    | 1 Composite Primer . . . . . 3ml |
| HT-52–54. . . . . 2.9ml           | 20 Dispensing Tips               |
| 6 Flow Dentine                    | 3 Instructions for use           |
| A2–3,5, B2–3, HT . . . . . 2ml    |                                  |

---

## 34 Creation VC

---

### VC Gingiva Kit | 820203

*Complete gingiva colours and primers*

#### **Livelier red aesthetics:**

The gingiva colours kit makes it easy to reproduce all areas of the gum, with a completely natural look. The porcelains are available in three viscosities (liquid, paste and gel) – for a homogeneous foundation, simple processing, mixing, and very thin layer thicknesses! The liquid opaque's greatest qualities are its extraordinary covering ability and ease of use. The paste VC gingiva materials can be used individually, mixed or in combination with other shades, while the gel modifiers are ideal for small space ratios and thin layer thicknesses, due to their viscosity.



- |                                 |                                   |
|---------------------------------|-----------------------------------|
| 4 Gingiva Opaque                | 1 Gingiva Translucent             |
| O-G3-6 . . . . . 2.4 ml         | GT light-pink . . . . . 2.4 ml    |
| 4 Gingiva G3-6 . . . . . 2.9 ml | 1 Metal Primer . . . . . 5 ml     |
| 6 Gingiva Modifier              | 1 Composite Primer . . . . . 3 ml |
| GM-1-3, 5-7 . . . . . 2.4 ml    | 3 Instructions for use            |

---

### VC Make up Neo Kit | 820204

*Universal stains*

#### **Amazingly simple and varied:**

The fine-grained, nano-filled stains and modifiers allow simple and efficient colouring, for both internal and external (transparent) characterisation of the layer structures. The high-quality VC Make up Neo porcelains are also well-suited for the palatal modification of Creopal denture teeth and shells, for greater efficiency and versatility. The special nano-filler technology helps to guarantee a perfect particle distribution, resulting in a very high resistance to abrasion and colour retention – even with thin layer thicknesses. In many cases, mechanical polishing can be omitted or clearly shortened. The two translucent gel materials, Translucent h.v. (high viscosity) and l.v. (low viscosity), are suitable for mixing with the Neo colours for internal characterisation.



- |                                |                                       |
|--------------------------------|---------------------------------------|
| 3 Make up Neo                  | 2 Translucent h.v., l.v. . . . 2.4 ml |
| MUN-A-C . . . . . 2.6 ml       | 10 Brush Round, Size 1                |
| 12 Make up Neo                 | 10 Brush Flat, Size 1                 |
| MUN-1-4, 7-12, IL, G. . 2.6 ml | 2 Brush Holder                        |
| 2 Make up Neo                  | 2 Instructions for use                |
| MUN-CL, MUN-CL h.c. . 5 ml     |                                       |



created by Uwe Gehringer

#### VC Trial Kit A2 | 820208

*The easy introduction of the system*

A colour system, a layering concept and a ceramic-like feeling with a reduced selection – matched to the most common shade A2. The high-quality 1-shade set offers dental technicians a wide spectrum for creating a natural look – even for very thin layer thicknesses. The **Flow porcelains** are a real highlight – also in combination with Creopal- and Creopal Shell-denture teeth.



- |  |                                    |
|--|------------------------------------|
| 1 Opaque O-A2 . . . . . 2.4ml                | 1 Flow Enamel EN-L . . . . . 2.9ml |
| 1 Opaque Dentine<br>OD-32 . . . . . 2.9ml    | 2 Syringe Plunger                  |
| 1 Dentine D-A2 . . . . . 2.9ml               | 1 Separator . . . . . 5ml          |
| 1 Enamel E-58 . . . . . 2.9ml                | 1 Diamond Polisher . . . . . 8g    |
| 1 Make up Neo MUN-2 . . . . . 2.6ml          | 1 Air Protect . . . . . 10ml       |
| 1 Flow Dentine A2 . . . . . 2ml              | 1 Composite Primer . . . . . 3ml   |
| 1 Flow Opaque Dentine<br>OD-A2 . . . . . 2ml | 1 Mixing Pad                       |
|  | 4 Instructions for use             |
|  | 1 Manual                           |

---

## 36 Creation VC

---

### VC Accessory Kit | 820205

#### Accessories and primers

Brushes, polishing paste or a specific primer: this kit has the right accessory for every laboratory table and indication.



2 Syringe Plunger	10 Disposable Palette
1 Separator . . . . . 5 ml	10 Brush Round, Size 1
1 Diamond Polisher . . . . . 8 g	10 Brush Flat, Size 1
1 Air Protect . . . . . 10 ml	1 Brush No. 7
1 Composite Primer . . . . . 3 ml	2 Brush Holder
1 Metal Primer . . . . . 5 ml	1 Mixing Pad
1 Ceramic Primer . . . . . 3 ml	4 Instructions for use

---

### VC Single Products and Bonding Agents

The right tools for a strong bond to different materials, or a long-lasting shine.



#### VC Metal Primer | 820154

Ensures secure bonding between the framework and the first opaque layer (VC Base Opaque).

#### VC Ceramic Primer | 820156

This primer's special composition makes it an important part of the adhesive bond to the first opaque layer, and subsequently, the composite bond.

#### VC Composite Primer | 820155

Light-curing primer for recreating the inhibition layer (reaction layer). Builds the bond from already polymerised material to material which has not yet been polymerised.

#### VC Separator | 820151

Composite-plaster insulation used with the working plaster model for direct contact with the composite.

#### VC Air Protect | 820153

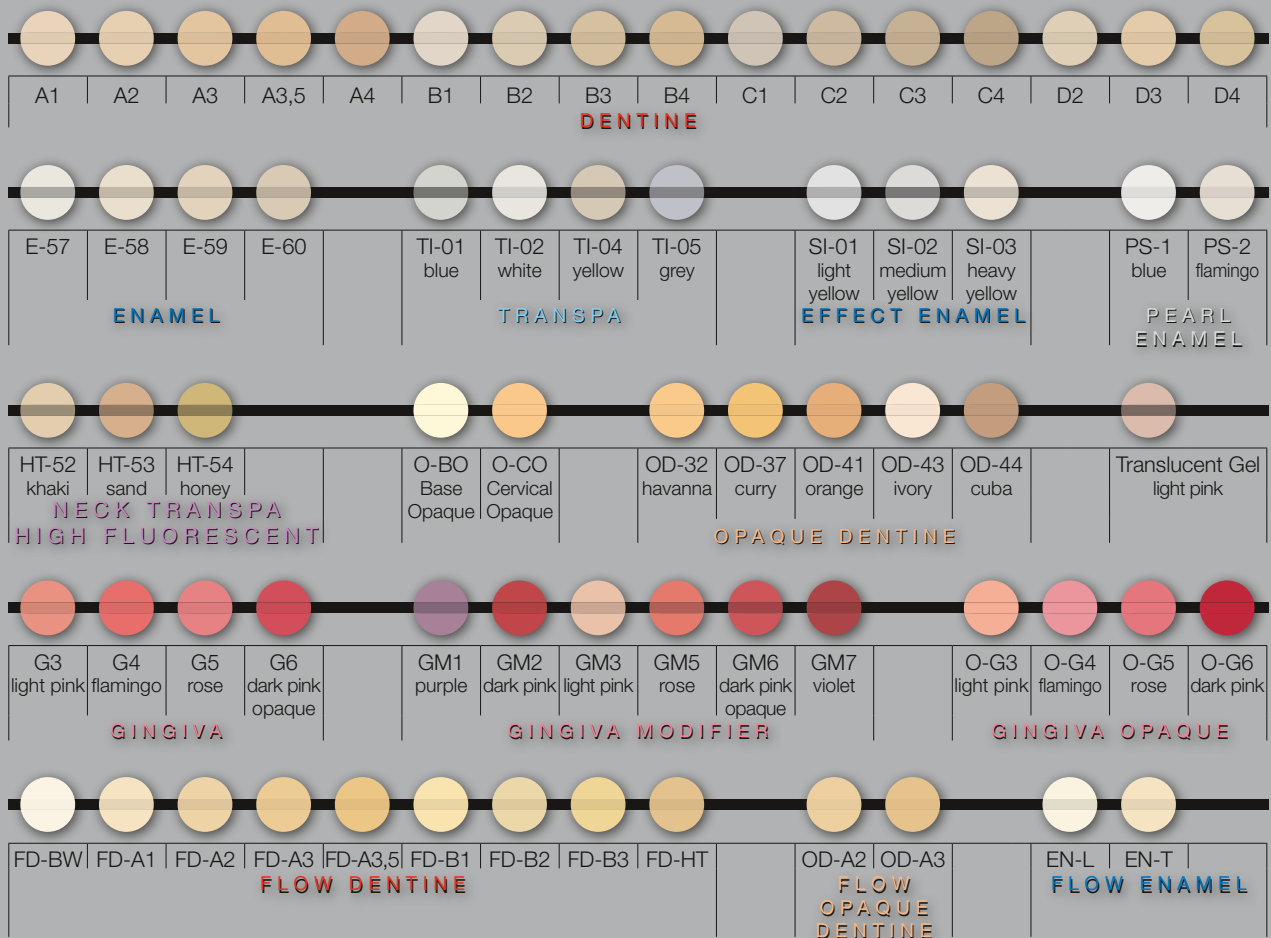
Acid blocker which protects the inhibition layer after polymerisation, in order to maintain the surface structure. This guarantees complete polymerisation of the surface.

#### VC Diamond Polisher | 820152

Extremely fine-grained diamond polishing paste which quickly and efficiently creates a controlled shine.







## MAKE UP NEO



# DENTURE TEETH

---

“Without any loss of aesthetics, the natural, slightly rectangular tooth shapes can perfectly be individualised and combined also due to the skilfully arranged interdental closing ridges.

My conclusion: Creopal teeth and shells are economic and aesthetic down to the smallest detail.”

*Michael Zangl*

---



## CREOPAL DENTURE TEETH –

exclusive range of composite teeth:  
multifaceted play of colour and shape

High aesthetics, stability and efficiency: Creopal is a modern system of composite teeth with enhanced strength – the result of intercultural exchange between Asian and European dental technicians. Thus the gnathology and the surface texture of the anterior teeth were designed in a Willi Geller project lasting several years, while the posterior teeth were developed in parallel by Yasuhiro Odanaka, among others.

The **ten anterior and five posterior tooth shapes** for the maxilla and mandibula are perfectly coordinated with each other. Particularly impressive features are their natural morphology and surface texture as well as an extraordinary gloss. As a result of the balanced filler content, the highly compacted composite teeth display high abrasion and flexural strength.

The exclusive range of artificial teeth also includes multifunctional **composite shells for the anterior and posterior area**. These Creopal Shells, despite their extremely thin layer thickness,

achieve the same colour effect and the same brightness value as full contour teeth – creating a masterful impact!

**Individually adaptable and multiple indications:** The Creopal system is available in 16 Vita® and two bleach shades, for perfect colour adaptation with acrylic and ceramic materials, the Creopal Shell system has a limited colour range. The artificial teeth produced by a four-layer process and the Creopal Shells with a two-layer method, are suitable for partial, combination and implant restorations as well as full dentures and as a set-up or mock-up for aesthetic try-ins and backward planning. The slightly rectangular tooth shapes can be perfectly individualised and combined – without any loss of aesthetics – best with Creation VC!

**Creopal teeth and shells – for individual tooth aesthetics.**

## THE BRILLIANCE OF CREOPAL AND CREOPAL SHELL:

- System-independent, lifelike denture teeth and veneer shells made from composite
- Tooth shapes with enhanced opalescence and fluorescence – for more light dynamics
- Rectangular basic forms can easily be individualised without loss of colour
- Closed interdental spaces for a natural set-up and papilla shaping
- Identical shape, colour and brilliance values with multi-layered teeth and shells
- Universal indications in temporary restorations, partial and full dentures

# 40 Creopal Denture Teeth

## CREOPAL: SHELL AND FULL CONTOUR

shell anterior	X	X	X	X	-		X	X	X	-		-	-	-	-		-	-	-	-	X
shell posterior	X	X	X	X	-		X	X	X	-		-	-	-	-		-	-	-	-	-
full anterior	X	X	X	X	X		X	X	X	X		X	X	X	X		X	X	X	X	X
full posterior	X	X	X	X	X		X	X	X	X		X	X	X	X		X	X	X	-	-



### Creation Tooth Cabinet

The tooth cabinet with five drawers offers enough space for up to 300 sets (60 anterior sets or 40 posterior sets per inlay). The drawer bases are made of anodised, black moulded sheet metal parts, and can be opened by lightly touching the front. Each drawer is fitted with a acrylic glass insertion plate at the front for individual labelling. Tooth cabinet without inlays and sets. 6-piece and 8-piece inlays are available individually.

Dimensions: 44.5 x 39.8 x 19.5 cm

Creation Tooth Cabinet | 1000300030

Assortment inlay for 72 anterior sets | PEARL00003

Assortment inlay for 48 posterior sets | PEARL00004





### Creopal Anterior

Fully anatomical composite anterior tooth.

#### Single sets, shapes and shades

Creopal upper jaw anterior teeth AU, 6-piece . . . . . 1 set  
6 shapes,  
16 tooth shades A1–D4 and 2 bleach shades FW2, FW5

Creopal lower jaw anterior teeth AL, 6-piece . . . . . 1 set  
4 shapes,  
16 tooth shades A1–D4 and 2 bleach shades FW2, FW5



### Creopal Posterior

Fully anatomical composite posterior tooth.

#### Single sets, shapes and shades

Creopal upper jaw posterior teeth PU, 8-piece . . . . . 1 set  
4 shapes, 16 tooth shades A1–D4

Creopal lower jaw posterior teeth PL, 8-piece . . . . . 1 set  
4 shapes, 16 tooth shades A1–D4



### Creopal Shell Anterior

Veneer composite anterior tooth.

#### Single sets, shapes and shades

Creopal Shell upper jaw anterior teeth SAU 6-piece . . . . . 1 set  
4 shapes,  
7 tooth shades A1–3.5, B1–3 and 1 bleach shade FW5

Creopal Shell lower jaw anterior teeth SAL, 6-piece . . . . . 1 set  
3 shapes,  
7 tooth shades A1–3.5, B1–3 and 1 bleach shade FW5



### Creopal Shell Posterior

Veneer composite posterior tooth.

#### Single sets, shapes and shades

Creopal Shell upper jaw posterior teeth SPU, 8-piece . . . . . 1 set  
4 shapes, 7 tooth shades A1–3.5, B1–3

Creopal Shell lower jaw posterior teeth SPL, 8-piece . . . . . 1 set  
4 shapes, 7 tooth shades A1–3.5, B1–3

---

## 42 Creopal Denture Teeth

---



### Creopal Denture Tooth Presentation Boxes

High-value aluminium chests with 33 sets in all shapes and Creopal primer.

Creopal Presentation Box	..... A1	1100000011
Creopal Presentation Box	..... A2	1100000012
Creopal Presentation Box	..... A3	1100000013
Creopal Presentation Box	..... A3.5	1100000014
Creopal Presentation Box	..... B2	1100000017
Creopal Presentation Box	..... B3	1100000018



### Creopal Shade Guide

Tooth shade guide with 16 tooth shades A1–D4 and 2 bleach shades FW2 and FW5.

Creopal Shade Guide | 1100000001



### Creopal Primer

Bonding agent for a secure bond between prosthetic tooth and prosthetic resin.

Creopal Primer | 1200000001



Type AU – upper anterior



Type AL – lower anterior



### Contact Relationship in Statics

Flat intercuspation

Calotte: 140

Can readily be used in a combination technique and complete prosthetics due to the anatomical shape and the cusp inclination.

---



## 44 Creapearl 2 Denture Teeth



### CREAPEARL 2 DENTURE TEETH – cosmetic dentistry that works functional and looks natural

Simply because being natural matters: the most fascinating characteristic of the Creapearl 2 anterior and posterior teeth is not only their brilliant aesthetics, but also their universal function. This means that the maximum demand for individuality can be reached. Minimal grinding on the body of the tooth also makes it easier to adjust the form of the tooth.

Thanks to the elaborate manufacturing process, high-value materials and a particularly strong dentine core, this range of anterior and posterior teeth, independent of any system, guarantees dental technicians **prosthetic teeth that are 100 % true to their colour, shape and function** – adapted to the Vita® shade system.

#### Creapearl 2 Anterior

The lively colour effect of the Creapearl 2 Anterior makes it a classic anterior tooth with a wide variety of shapes. Its other distinguishing features are its **almost natural layering** with increased opalescence, fluorescence and translucence, and its lifelike surface structure.

#### Creapearl 2 Posterior

The posterior tooth has a **high level of abrasion resistance** and increased vertical stability and resilience – for a long life and resistance to plaque. Its **natural surface morphology** also makes it feel comfortable in the mouth.

The basic concept of the Creapearl 2 tooth range involves the reproduction of a natural tooth's function and character, using strengthened PMMA resin. The form follows the function, bringing the **fundamental principles of Creation** into effect:

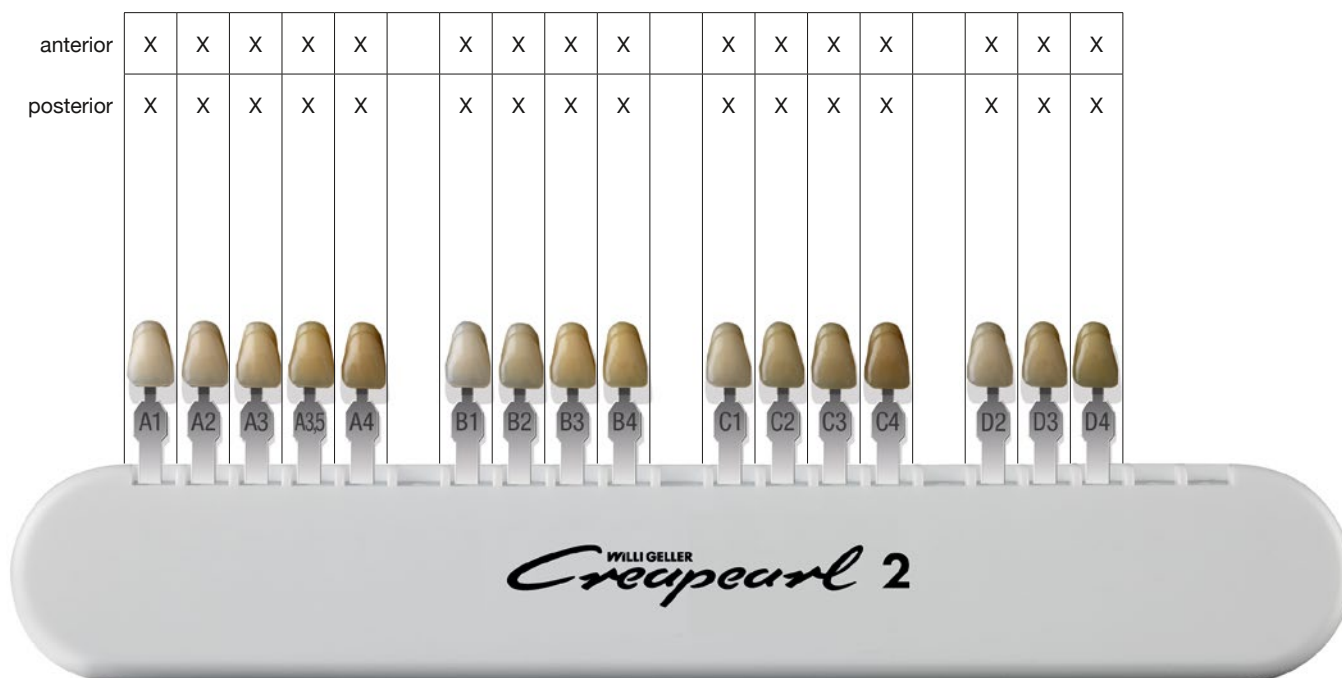
- Raised opacity
- Chromatic dentine
- Opalescent glaze coating
- Individual high-contrast layering (coloured/white, opaque/translucent)

When the form and surface texture of the Creapearl 2 anterior teeth was conceived by master of ceramics Willi Geller, the MDT Dieter Schulz came up with the concept for the posterior teeth, using the occlusal compass and drawing on his great experience in NAT/NFR recovery technology. Thanks to this easy-to-understand positioning concept and the **multi-functional occlusal surface design** (with free spaces in the occlusion), all types of position and biting situations can be implemented.

**Creapearl 2: natural and functional across all our designs!**

### THE BRILLIANCE OF CREAPEARL 2:

- Anterior and posterior tooth range with perfect colouring and function
- Dynamic colour penetration for a reduction without colour wearing away
- Closed approximal areas for a vital red/white aesthetic ("Geller Wing")
- More expressive and natural structure of the occlusal surface relief
- Outstanding resistance to wear and tear
- Strong, characteristic tooth shape – can be used by anyone, for anyone, and adapted to suit the individual

**CREAPEARL 2****Creation Tooth Cabinet**

The tooth cabinet with five drawers offers enough space for up to 300 sets (60 anterior sets or 40 posterior sets per inlay). The drawer bases are made of anodised, black moulded sheet metal parts, and can be opened by lightly touching the front. Each drawer is fitted with a acrylic glass insertion plate at the front for individual labelling. Tooth cabinet without inlays and sets. 6-piece and 8-piece inlays are available individually.

Dimensions: 44.5 x 39.8 x 19.5 cm

Creation Tooth Cabinet | 1000300030

Assortment inlay for 72 anterior sets | PEARL00003

Assortment inlay for 48 posterior sets | PEARL00004



## 46 Creapearl 2 Denture Teeth



### Creapearl 2 Denture Tooth Presentation Boxes

High-value aluminium chests with 33 sets in all shapes.

Creapearl 2 Presentation Box . . . . . A1 | 1000300011  
 Creapearl 2 Presentation Box . . . . . A2 | 1000300012  
 Creapearl 2 Presentation Box . . . . . A3 | 1000300013  
 Creapearl 2 Presentation Box . . . . . A3.5 | 1000300014



### Creapearl 2 Shade Guide

Tooth shade guide with 16 tooth shades A1–D4.

Creapearl 2 Shade Guide | 1000300009



### Creapearl 2 Anterior

Fully anatomical anterior tooth made from strengthened PMMA resin.

### Single sets, shapes and shades

Creapearl 2 upper jaw anterior teeth A and V, 6-piece . . . . 1 set  
 10 shapes, 16 tooth shades A1–D4

Creapearl 2 lower jaw anterior teeth U, 6-piece . . . . . 1 set  
 5 shapes, 16 tooth shades A1–D4



### Creapearl 2 Posterior

Fully anatomical posterior tooth made from strengthened PMMA resin.

### Single sets, shapes and shades

Creapearl 2 upper jaw posterior teeth D, E, F, G, 8-piece . . 1 set  
 9 shapes, 16 tooth shades A1–D4

Creapearl 2 lower jaw posterior teeth D, E, F, G, 8-piece . . 1 set  
 9 shapes, 16 tooth shades A1–D4

Technical specifications	Dynamicline (D)	Balanceline (E, F)	Gnathosline (G)
Dimensions	S, M, L	S, M	S, M
Morphology	Constructional morphology (NAT)	Extended functional morphology (NFR)	Natural shape and cusp inclination

Constructional morphology (NAT), extended functional morphology (NFR), MDT Dieter Schulz



**Type A Anatomic – upper anterior teeth with natural root-shaped emergence profile**

The denture tooth is a perfect anatomical copy of a natural tooth.



**Type V Vario – upper anterior teeth for individual contouring**

The clinical tooth crown can be modified for an individual appearance, with or without grinding down the tooth neck, thanks to the model of the gingival edge.



**Type U – lower anterior teeth**

Can be arranged in the same way as Type V Vario, without affecting the anatomical circumstances. In this way, the length of the tooth itself can be determined.



**Dynamicline**

Calotte: 140

Condyle inclination (HCN) FH 45° / CE 30°

Bennett angle 10°, ISS 0.5 mm

Lateroretrusion (LRT) 20°

Retrusion (RT) 0.5 mm



**Balanceline E**

Calotte: 140

Condyle inclination (HCN) FH 30° / CE 15°

Bennett angle 10°, ISS 1.0 mm

Lateroretrusion (LRT) 20°

Retrusion (RT) 1.0 mm



**Balanceline F**

Basal reduced

Calotte: 140

Condyle inclination (HCN) FH 30° / CE 15°

Bennett angle 10°, ISS 1.0 mm

Lateroretrusion (LRT) 20°

Retrusion (RT) 1.0 mm



**Gnathosline G / Willi Geller**

Calotte: 140

Due to the natural shape and the cusp inclination, the denture teeth can be used for partial, combined and full denture restorations.

---

## 48 Creapearl Denture Teeth

---

WILLI GELLER  
*Creapearl*



### CREAPEARL DENTURE TEETH – individual anterior tooth design, as unique as nature itself

Irresistibly simple, and with a multitude of individual shapes: the Creapearl prefabricated teeth, tried and tested for many years, are an ideal symbiosis of natural looks, functionality and brilliant aesthetics. Thanks to minimal shape changes with, or through different types of positions, the dental technicians have a **“tailor-made suit”** at their disposal!

The natural appearance of the anterior teeth is still supported by the special triple layering with the soft colouring and strong dentine core. The **dynamic colour characteristics** and lifelike appearance of the artificial teeth do not change, even during grinding for forming purposes. Another unique selling point is their **natural surface texture**, with a precisely adjusted surface sheen.

The basic concept of the Creapearl anterior tooth range, which is manufactured using an elaborate, semi-manual process, involves the aesthetic and functional reproduction of a natural tooth in strengthened PMMA resin. The form follows the function, bringing the **fundamental principles of creation** into effect:

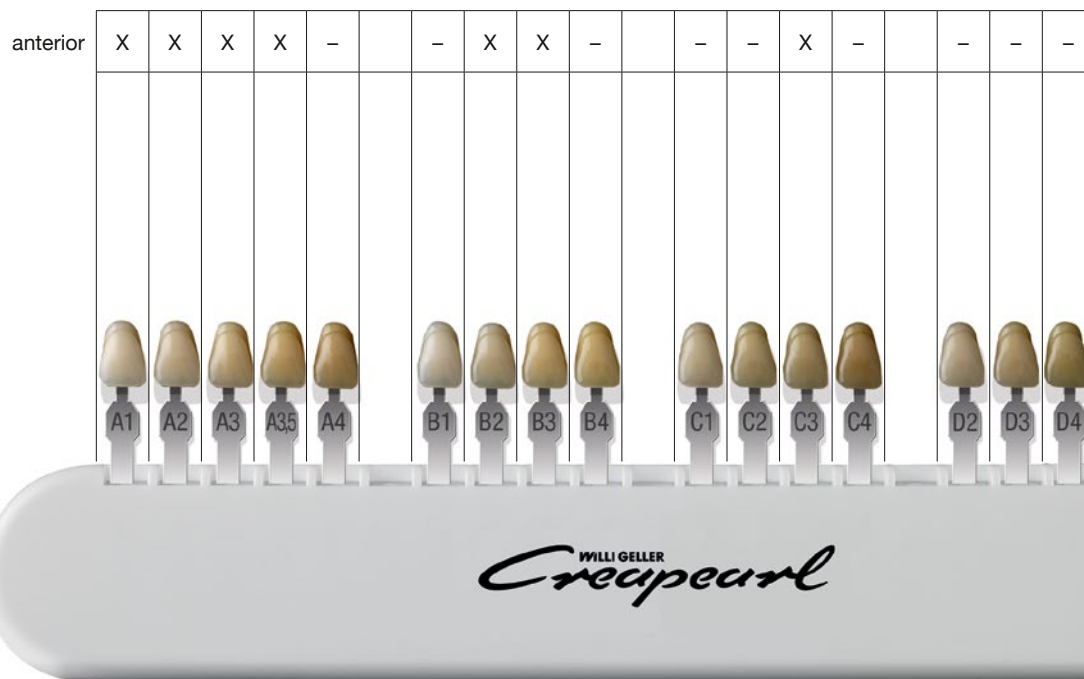
- Raised opacity
- High chromatic dentine colouring for better dynamic colour penetration
- Integrated opalescent incisal area
- Individual high-contrast layering (coloured/white, opaque/translucent)

**Natural anterior tooth aesthetics – makes a perfect combination with Creapearl 2!**

### THE BRILLIANCE OF CREAPEARL:

- Anterior denture tooth for top quality aesthetic demands
  - A highly opalescent incisal area guarantees brilliant aesthetics, and customisation without discolouration
  - Brilliant light conductivity thanks to balanced fluorescence and translucence
  - Sealed interdental area for a lively “red-white” design
  - Expressive, natural shapes with deep interdental closure bands, to counteract clouding for individual positions
  - Semi-manual manufacturing process, with individual needs
-

## CREAPEARL



### Creation Tooth Cabinet

The tooth cabinet with five drawers offers enough space for up to 300 sets (60 anterior sets or 40 posterior sets per inlay). The drawer bases are made of anodised, black moulded sheet metal parts, and can be opened by lightly touching the front. Each drawer is fitted with a acrylic glass insertion plate at the front for individual labelling. Tooth cabinet without inlays and sets. 6-piece and 8-piece inlays are available individually.

Dimensions: 44.5 x 39.8 x 19.5 cm

Creation Tooth Cabinet | 1000300030

Assortment inlay for 72 anterior sets | PEARL00003

Assortment inlay for 48 posterior sets | PEARL00004

## 50 Creapearl Denture Teeth



### Creapearl Denture Tooth Presentation Boxes

High-value aluminium chests with 15 sets in all anterior tooth shapes.

Creapearl Presentation Box	..... A1	CR01033A10
Creapearl Presentation Box	..... A2	CR01033A20
Creapearl Presentation Box	..... A3	CR01033A30
Creapearl Presentation Box	..... A3.5	CR01033A35



### Creapearl Shade Guide

Tooth shade guide with 7 tooth shades A1–3.5, B2, B3, C3.

Creapearl Shade Guide | PEARL00011



### Creapearl Anterior

Fully anatomical anterior tooth made from strengthened PMMA resin.

#### Single sets, shapes and shades

Creapearl upper jaw anterior teeth A and V, 6-piece ..... 1 set  
10 shapes,  
7 tooth shades A1–3.5, B2, B3, C3

Creapearl lower jaw anterior teeth U, 6-piece ..... 1 set  
5 shapes,  
7 tooth shades A1–3.5, B2, B3, C3



#### Type A Anatomic – upper anterior teeth with natural root-shaped emergence profile

The denture tooth is a perfect anatomical copy of a natural tooth.



#### Type V Vario – upper anterior teeth for individual contouring

The clinical tooth crown can be modified for an individual appearance, with or without grinding down the tooth neck, thanks to the model of the gingival edge.



#### Type U – lower anterior teeth

Can be arranged in the same way as Type V Vario, without affecting the anatomical circumstances. In this way, the length of the tooth itself can be determined.





Creapearl 2

WILLI GELLER  
*Creation*  
SIMPLY BRILLIANT

---

## 52 Merchandising

---



### Creation Sketch Pad

The premium sketch pad by Creation is eye-catching in black and white. The blind embossed brand on the cover also brings attention to the special feel. The core of the pad consists of high-quality 100g Munken Polar Rough paper (100 sheets), the cover consists of 700g cardboard (front and back, double-laminated). The separate stretch band acts as a closure strap and pen holder (for five pens) at the same time.

Accessories: Stretch band and pencil

Creation Sketch Pad | 911500



### Creation Hand Towel

High-quality Creation hand towel for the technician's working place. Made of 100 % absorbent cotton, and 480 g/m<sup>2</sup> terry cotton.

Dimensions: 30 x 50 cm

Colour: dark grey

Creation Hand Towel | 910711



### Creation Espresso Cup

The Creation espresso cup is much more than a free gift or promotional product which is accepted with gratitude and then quickly forgotten again. The cup is a pleasant, content-filled message, beautifully formed and carefully manufactured. It is functional, and looks good. It nestles nicely in your hand and leaves a lasting impression for the recipient.

Package content: 6 pieces

Creation Espresso Cup | 911502



### Creation USB Stick mini – 16 GB

Small and practical: a rotating metal sleeve covers and protects the actual USB plug when not in use. Packed in a black cardboard box with clear display panel, ready-fitted key ring with chain, black lanyard.

Print: 1x laser engraving, Creation logo

Creation USB Stick mini – 16 GB | 910912

---






**WILLIGELLER**  
*Creation*  
SIMPLY BRILLIANT



YOUR LOCAL DEALER

 0483

DISTRIBUTOR  
Creation Willi Geller International GmbH | Koblacherstraße 3, 6812 Meiningen, Austria  
Phone +43 (0)5522 76784, Fax +43 (0)5522 76784-59 | [info@creation-willigeller.com](mailto:info@creation-willigeller.com), [www.creation-willigeller.com](http://www.creation-willigeller.com)

MANUFACTURER  
KLEMA Dentalprodukte GmbH | Koblacherstraße 3a, 6812 Meiningen, Austria

WILLI GELLER  
*Creation*  
SIMPLY BRILLIANT